

HANNAH PEARL



- ILLUSTRATOR PORTFOLIO -

HPearlWerner@gmail.com

HannahPearlArt.com

[@Wampus_Doxy - Instagram](https://www.instagram.com/Wampus_Doxy)

ABOUT ME

I AM A ILLUSTRATOR AND AUTHOR BASED IN ARIZONA

I grew up drawing every free moment I had, translating the stories in my head into illustrations and writing. I have spent my life exploring the connection between my love of visual and written media, finding the most joy out of sharing those stories with others and bringing the same enjoyment to them as I feel with my works.

From Publication to Editorial illustration and even character work and surface design, I love to do it all. My digital works show off my love of detail, color, and texture in every piece I make.

I am also the lead creative for CulDog, creating all of their packaging and branding, and getting to work hand in hand with the owners to bring their vision to life.



ALICE IN WONDERLAND NARRATIVE TAPESTRY

Created as an imagined print
poster for a hypothetical
Alice's Adventures in
Wonderland book box set

Created in Procreate



LOCH NESS MONSTER

Created as an imagined book cover or poster for a hypothetical children's book about Loch Ness and its mythology

Created in Procreate and Photoshop



EINSTEIN'S DREAMS NARRATIVE ILLUSTRATION

8.5 x 11 sized illustration
created based on the chapter
“April 26, 1905” from the
book Einstein’s Dreams by
Alan Lightman

Created in Procreate



**MURDER MYSTERY
NARRATIVE ILLUSTRATION**

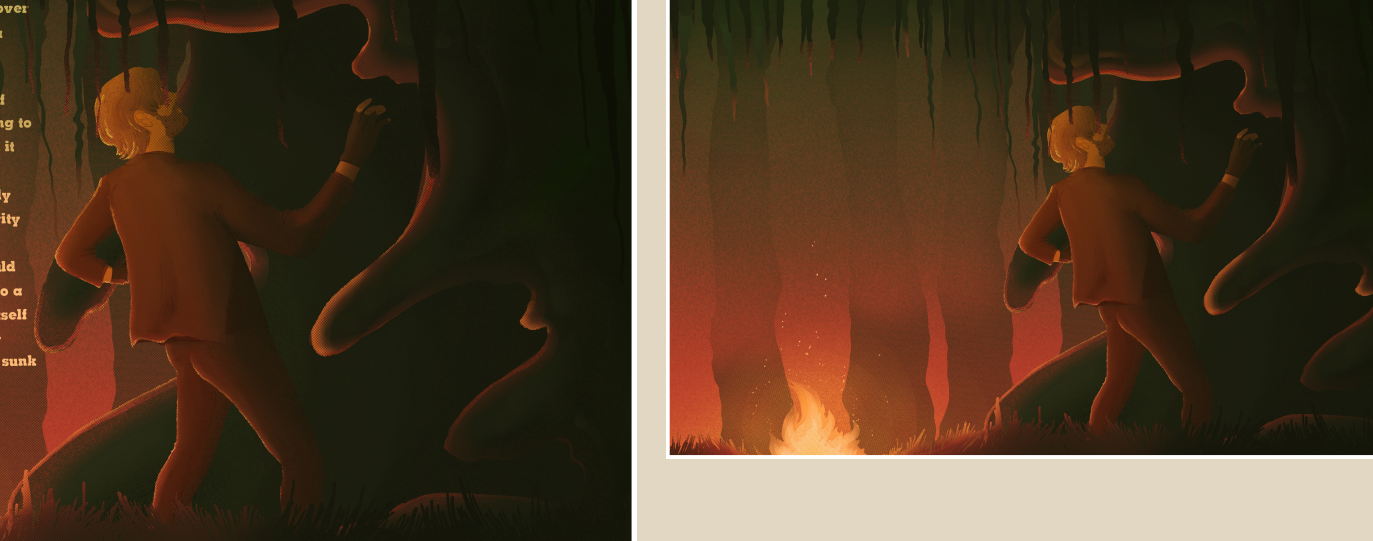
8.5 x 12 sized illustration created based on my murder
mystery short novel

Created in Procreate and Photoshop

SLIME

It was a great gray - black hood of horror, moving over the floor of the sea. It slid through the soft ooze like a monstrous mantle of slime obscenely animated with questioning life. It was by turns viscous and fluid, at times it flattened out and flowed through the carpet of mud like an inky pool; occasionally it paused, seeming to shrink upon itself, and reared up out of the ooze until it resembled an irregular cone or a gigantic hood.

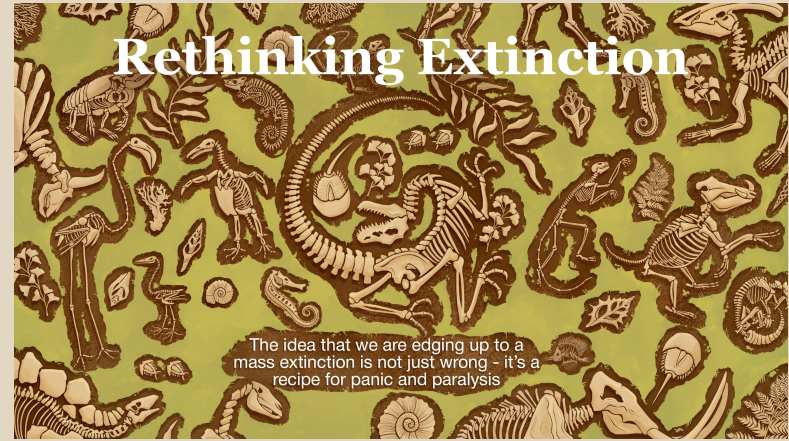
Although it possessed no eyes, it had a marvelously developed sense of touch, and it possessed a sensitivity to my new vibrations, which was almost a kin to telepathy. It was plastic, essentially shapeless. It could shoot out long tentacles, until it bore a resemblance to a nightmare, squid or a huge starfish; it could retract itself into a round flatten disc, or squeeze into an a regular hunched shape so that it looked like a black boulder sunk on the bottom of the sea.



SLIME SPREAD ILLUSTRATION

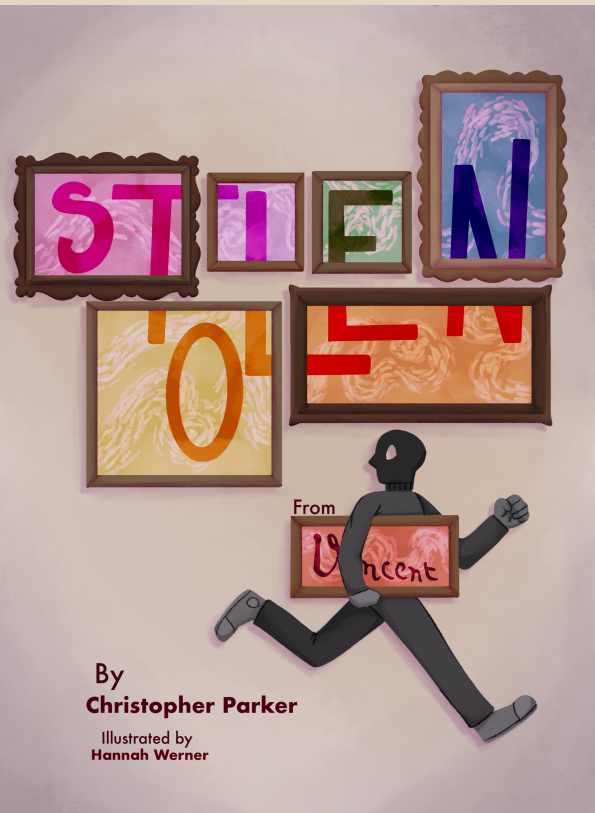
Two-page print spread created for the story Slime by Joseph Payne Brennan, with and without text

Created in Procreate



**RETHINKING EXTINCTION
EDITORIAL ILLUSTRATION**

Web cover image created as a hypothetical project bid for
Aeon magazine for the article “Rethinking Extinction” by
Stewart Brand
Created in Procreate

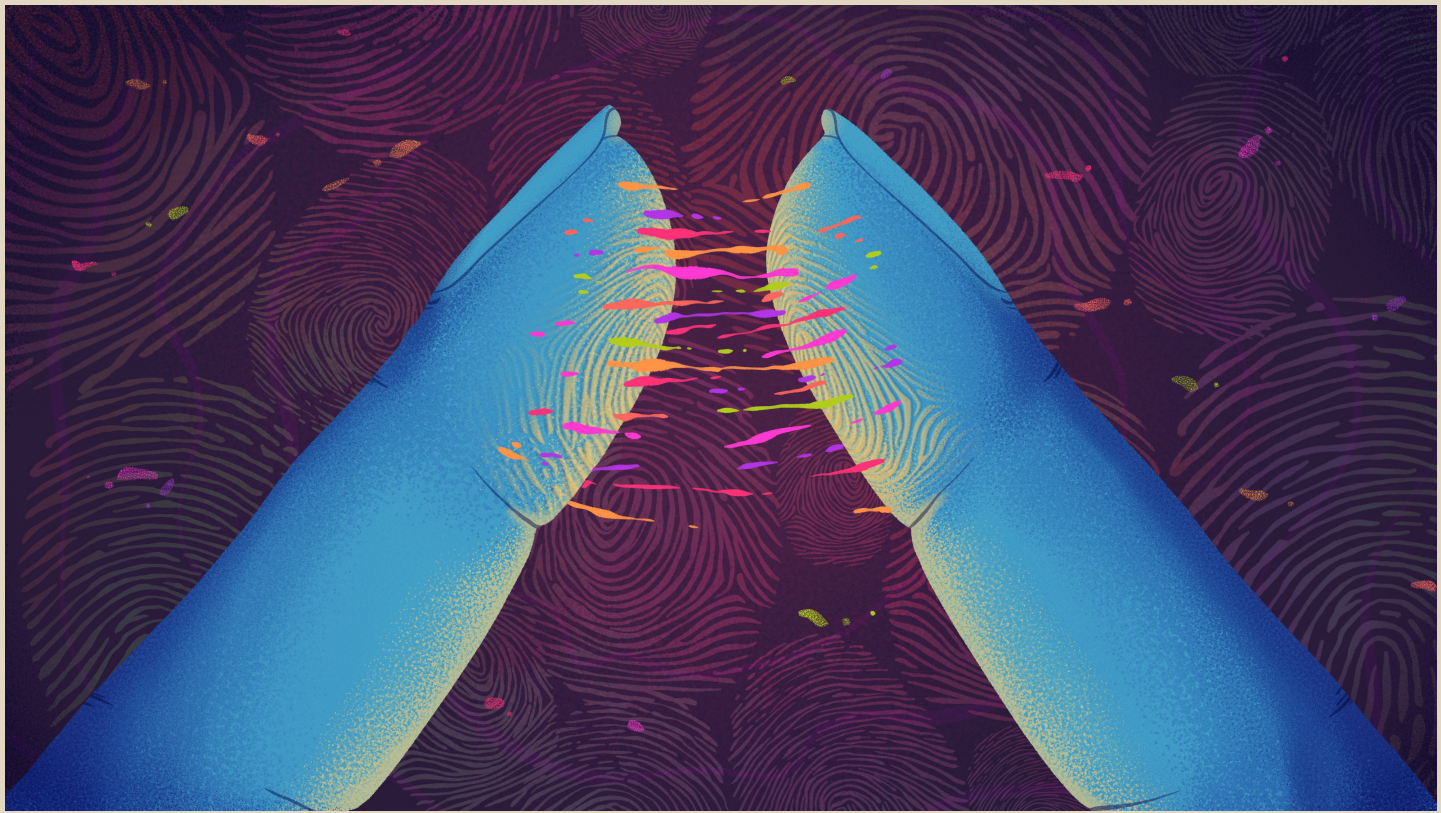


By
Christopher Parker

Illustrated by
Hannah Werner

STOLEN FROM VINCENT EDITORIAL ILLUSTRATION

Two-page magazine spread created for a hypothetical print of the article “Stolen van Gogh Painting Worth Millions Returned in an Ikea Bag” by Christopher Parker
Created in Procreate



**SENSITIVITY OF TOUCH
EDITORIAL ILLUSTRATION**

Web cover image created as a hypothetical project bid for Quanta magazine for the article “Touch, Our Most Complex Sense, Is a Landscape of Cellular Sensors” by Ariel Bleicher
Created in Procreate

THANK YOU

